

BASELWORLD

1

Eingang Entrance
City Lounge Nord

Entrance Eingang

1

City Lounge Nord

DAYLIGHT
SAVING TIME
SUNDAY MARCH 25, 2018
WAKE UP ONE HOUR
EARLIER

BA



PATEK PHILIPPE
GENEVE

PATEK PHILIPPE
GENEVE



New Models



Il nuovo modello "Mito Blue" è stato progettato per essere un orologio di lusso che si distingue per la sua eleganza e la sua precisione. È un orologio che si distingue per la sua eleganza e la sua precisione.

NEW



Il nuovo modello "Mito Blue" è stato progettato per essere un orologio di lusso che si distingue per la sua eleganza e la sua precisione. È un orologio che si distingue per la sua eleganza e la sua precisione.

NEW



Il nuovo modello "Mito Blue" è stato progettato per essere un orologio di lusso che si distingue per la sua eleganza e la sua precisione. È un orologio che si distingue per la sua eleganza e la sua precisione.

NEW





68 7234 – Calatrava Pilot Travel Time

Self-winding. Caliber 324 S C FUS. Dual time zone mechanism indicating local and home time. Local and home day/night indication in apertures. Local date by hand. Sweep seconds hand. Sapphire-crystal case back. Rose gold. Ø 37.5 mm.

NEW 68



- 67 5067 - Aquanaut Luce "Misty Blue"
Quartz. Caliber E 23-250 S C. Date in an aperture.
Sweep seconds hand. Bezel set with 46 diamonds
(~1 ct). Screw-down crown. Steel. Ø 35.6 mm.

NEW 67



66 7150/250 – Chronograph

Manual winding. Caliber CH 28-535 F5.
Chronograph. Central chronograph hand and
instantaneous 30-minute counter. Seconds sub-dial.
Pulsimeter. Bezel set with 72 diamonds (0.68 cts).
Prong buckle set with 27 diamonds (0.21 ct).
Guilloché pushers. Sapphire-crystal case back.
Rose gold. Ø 38 mm.

NEW 66



72 5205 - Annual Calendar

Self-winding. Caliber 324 S QA LU 24H/206.

Annual Calendar. Day, date and month in apertures.

Moon phases. 24-hour display. Sweep seconds hand.

Skeletonized lugs. Sapphire-crystal case back.

White gold. \varnothing 40 mm.

NEW 72



70 5740/1 – Nautilus Perpetual calendar
Self-winding. Caliber 240 Q. Perpetual calendar.
Day, date, month, leap year and 24-hour display
by hands. Moon phases. Screw down crown.
Sapphire-crystal case back. White gold. Ø 40 mm.

NEW 70



69 5968 – Aquanaut Chronograph

Self-winding. Caliber CH 28-520 C/528.

Flyback chronograph. Sweep seconds hand
(chronograph hand). 60-minute counter.

Date in an aperture. Screw down-crown.

Sapphire-crystal case back. Steel. \varnothing 42.2 mm.

NEW 69



- 71 5524 – Calatrava Pilot Travel Time
Self-winding. Caliber 324 S C FUS. Dual time zone mechanism indicating local and home time. Local and home day/night indication in apertures. Local date by hand. Sweep seconds hand. Sapphire-crystal case back. Rose gold. Ø 42 mm.

NEW 71

New Models



18K yellow gold case, 42 mm diameter, 12.5 mm thickness. Water resistant to 30 meters. Swiss Made. Reference: 5202. Price: 12,500.-

NEW 01



18K yellow gold case, 42 mm diameter, 12.5 mm thickness. Water resistant to 30 meters. Swiss Made. Reference: 5203. Price: 12,500.-

NEW 02



18K yellow gold case, 42 mm diameter, 12.5 mm thickness. Water resistant to 30 meters. Swiss Made. Reference: 5204. Price: 12,500.-

NEW 03



18K yellow gold case, 42 mm diameter, 12.5 mm thickness. Water resistant to 30 meters. Swiss Made. Reference: 5205. Price: 12,500.-

NEW 04



PATEK PHILIPPE
GENEVE

POLIZEI

Nautilus Men



121 Gold-tone watch with blue dial, steel case and bracelet. Reference: Caliber 984.2. Case size: 40mm. Price: \$1,200.

122 Steel watch with white dial, steel case and bracelet. Reference: Caliber 984.2. Case size: 40mm. Price: \$1,200.

123 Steel watch with blue dial, steel case and bracelet. Reference: Caliber 984.2. Case size: 40mm. Price: \$1,200.

124 Steel watch with white dial, steel case and bracelet. Reference: Caliber 984.2. Case size: 40mm. Price: \$1,200.

125 Steel watch with white dial, steel case and bracelet. Reference: Caliber 984.2. Case size: 40mm. Price: \$1,200.

126 Steel watch with white dial, steel case and bracelet. Reference: Caliber 984.2. Case size: 40mm. Price: \$1,200.

127 Steel watch with white dial, steel case and bracelet. Reference: Caliber 984.2. Case size: 40mm. Price: \$1,200.

128 Steel watch with white dial, steel case and bracelet. Reference: Caliber 984.2. Case size: 40mm. Price: \$1,200.

129 Steel watch with white dial, steel case and bracelet. Reference: Caliber 984.2. Case size: 40mm. Price: \$1,200.

130 Steel watch with white dial, steel case and bracelet. Reference: Caliber 984.2. Case size: 40mm. Price: \$1,200.





NEW 161

162

163

164

Nautilus Men



Calatrava Men



18 2016
Self-winding Calatrava 102.75, stainless steel
Rose gold or platinum, 32 mm

1916
Self-winding Calatrava 104.75, C. Case by
Hans Schwab, stainless steel, leather strap
Rose gold, white gold, 32 mm

1916
Self-winding Calatrava 104.5, C. Case by
Hans Schwab, stainless steel, leather strap
Rose gold, 32 mm

1916 1916
Self-winding Calatrava 104.5, C. Case by
Hans Schwab, stainless steel, leather strap
Rose gold, 32 mm

1916 1916
Self-winding Calatrava 104.5, C. Case by
Hans Schwab, stainless steel, leather strap
Rose gold, 32 mm

1916 1916
Self-winding Calatrava 104.5, C. Case by
Hans Schwab, stainless steel, leather strap
Rose gold, 32 mm

1916 1916
Calatrava cufflinks, stainless steel, gold

1916 1916
Calatrava cufflinks, polished steel, gold



Gondolo and Golden Ellipse



185 - 59102 - Calatrava
 186 - White dial on strong black leather 18K gold case
 1870 in rose gold

188 - 57510 - Golden Ellipse 18K rose gold
 189 - White dial with 18K rose gold case
 190 - Hand engraved and black lacquered case
 191 - 18K gold dial with 18K rose gold engraved with
 PATEK PHILIPPE GENEVE 2016. Case size with crown
 34.5 x 35.5 mm

192 - 59150-01 - Calatrava
 Hand engraved and black lacquered case. White dial

193 - 59150-02
 Hand engraved and black lacquered case. White dial



Annual Calendars



48. **SW1 - Annual Calendar**
 Self-winding, yellow gold 18K with 192,000
 hours of power reserve. The watch is available
 in three different finishes: platinum, yellow
 gold and white gold.

49. **SW2 - Annual Calendar**
 Self-winding, yellow gold 18K with 192,000
 hours of power reserve. The watch is available
 in three different finishes: platinum, yellow
 gold and white gold.

46. **SW100 - 2nd Edition**
 Self-winding, diamond, 18K white gold.

47. **SW101 - 2nd Edition**
 Self-winding, diamond, 18K white gold.

45. **SW102 - 2nd Edition**
 Self-winding, diamond, 18K white gold.

45. **SW7 - Annual Calendar**
 Self-winding, yellow gold 18K with 192,000
 hours of power reserve. The watch is available
 in three different finishes: platinum, yellow
 gold and white gold.

44. **SW11 - Annual Calendar**
 Self-winding, yellow gold 18K with 192,000
 hours of power reserve. The watch is available
 in three different finishes: platinum, yellow
 gold and white gold.

43. **SW12 - Annual Calendar**
 Self-winding, yellow gold 18K with 192,000
 hours of power reserve. The watch is available
 in three different finishes: platinum, yellow
 gold and white gold.

42. **SW13 - Annual Calendar**
 Self-winding, yellow gold 18K with 192,000
 hours of power reserve. The watch is available
 in three different finishes: platinum, yellow
 gold and white gold.



Perpetual Calendars and Multiple Time Zones



8117 - Platinum perpetual calendar.

Self-winding, Caliber 9010, 60-hour power reserve, with moon phase, leap year, day, month, year and 24-hour time zone. 42 mm. 18K white gold. Reference 116550.

8117 - Rose gold perpetual calendar.

Self-winding, Caliber 9010, 60-hour power reserve, with moon phase, leap year, day, month, year and 24-hour time zone. 42 mm. 18K rose gold. Reference 116550.

8117 - Perpetual calendar.

Self-winding, Caliber 9010, 60-hour power reserve, with moon phase, leap year and day/night indicator. 42 mm. 18K white gold. Reference 116550.

8117 - Perpetual calendar.

Self-winding, Caliber 9010, 60-hour power reserve, with moon phase, leap year and day/night indicator. 42 mm. 18K white gold. Reference 116550.

8117 - Platinum, Rolex Perpetual.

Self-winding, Caliber 9010, 60-hour power reserve, with moon phase, leap year and day/night indicator. 42 mm. 18K white gold. Reference 116550.



Chronographs and Celestial



97 970 - Annual calendar chronograph
 automatic, Caliber 970-1/00-800 CA-26
 Annual Calendar. Day, date, month and day/night indicator
 chronograph. Polished chronograph. Swiss automatic. Last
 movement: 18,000 vph and 12-hour mechanical
 power reserve. Steel set with 20 baguette
 diamonds in 18kt. Red leather strap set with 20 baguette
 diamonds. 180mm diameter crystal case back.
 Case gold in platinum. 21,400 mm.

98 970 - Chronograph
 Annual Calendar. Caliber 970-1/00-800 CA-26
 Annual chronograph. Day, date, month and day/night indicator
 chronograph. Polished chronograph. Swiss automatic. Last
 movement: 18,000 vph and 12-hour mechanical
 power reserve. Steel set with 20 baguette
 diamonds in 18kt. Red leather strap set with 20 baguette
 diamonds. 180mm diameter crystal case back.
 Case gold in platinum. 21,400 mm.

99 970-18 - Annual celestial chronograph
 automatic, Caliber 970-1/00-800 CA-26
 Annual Calendar. Day, date, month and day/night indicator
 chronograph. Polished chronograph. Swiss automatic. Last
 movement: 18,000 vph and 12-hour mechanical
 power reserve. Steel set with 20 baguette
 diamonds in 18kt. Red leather strap set with 20 baguette
 diamonds. 180mm diameter crystal case back.
 Case gold in platinum. 21,400 mm.

100 970 - Perpetual celestial chronograph
 automatic, Caliber 970-1/00-800 CA-26
 Perpetual Calendar. Day, date, month and day/night indicator
 chronograph. Polished chronograph. Swiss automatic. Last
 movement: 18,000 vph and 12-hour mechanical
 power reserve. Steel set with 20 baguette
 diamonds in 18kt. Red leather strap set with 20 baguette
 diamonds. 180mm diameter crystal case back.
 Case gold in platinum. 21,400 mm.

101 970 - Perpetual celestial chronograph
 automatic, Caliber 970-1/00-800 CA-26
 Perpetual Calendar. Day, date, month and day/night indicator
 chronograph. Polished chronograph. Swiss automatic. Last
 movement: 18,000 vph and 12-hour mechanical
 power reserve. Steel set with 20 baguette
 diamonds in 18kt. Red leather strap set with 20 baguette
 diamonds. 180mm diameter crystal case back.
 Case gold in platinum. 21,400 mm.

102 970 - Perpetual celestial chronograph
 automatic, Caliber 970-1/00-800 CA-26
 Perpetual Calendar. Day, date, month and day/night indicator
 chronograph. Polished chronograph. Swiss automatic. Last
 movement: 18,000 vph and 12-hour mechanical
 power reserve. Steel set with 20 baguette
 diamonds in 18kt. Red leather strap set with 20 baguette
 diamonds. 180mm diameter crystal case back.
 Case gold in platinum. 21,400 mm.





PATEK PHILIPPE
GENEVE

PATEK PHILIPPE
GENEVE

PATEK PHILIPPE
GENEVE

Aquanaut Ladies



D 3048 - Aquanaut Luxe "Chocolate Brown" or "Pure White"
with 304 S.C. Date in an aperture.
18K gold, 40 diamonds (41 ct),
rose gold.

D 3075 - Aquanaut Luxe "White Ice" with
Self-winding Caliber 3241 C. Case in stainless steel.
Swiss automatic. Steel set with 40 tapered diamonds.
18K gold, Aquanaut Luxe case ring set with 12 tapered
diamonds (4.34 ct). Swarovski crystal. Sapphire crystal
case back. Rose gold. 35.8 mm.

Twenty~4®



1 Quartz, Caliber 215, Case set with 24 diamonds 0.64 ct.
Case set with 24 diamonds 0.62 ct.
Rose gold, 25.1 x 30 mm

2 Quartz, Caliber 215, Case set with 24 diamonds 0.64 ct.
Case set with 24 diamonds 0.62 ct.
Rose gold, 25.1 x 30 mm

3 Quartz, Caliber 215, Case set with 24 diamonds 0.64 ct.
Case set with 24 diamonds 0.62 ct.
Rose gold, 25.1 x 30 mm

4 Quartz, Caliber 215, Case set with 24 diamonds 0.64 ct.
Case set with 24 diamonds 0.62 ct.
Rose gold, 25.1 x 30 mm

5 2023 18K Yellow Gold Earrings
Set with 18 diamonds 0.16 ct. VS1, VS2

Nautilus Ladies



1. 2011 - Ladies' Automatic President Ladies President
 Reference: 5011-1234-5678-9012-3456789012-3456789012
 Price: € 12,345.67

2. 2012 - Ladies' Automatic President Ladies President
 Reference: 5012-1234-5678-9012-3456789012-3456789012
 Price: € 12,345.67

3. 2013 - Ladies' Automatic President Ladies President
 Reference: 5013-1234-5678-9012-3456789012-3456789012
 Price: € 12,345.67

4. 2014 - Ladies' Automatic President Ladies President
 Reference: 5014-1234-5678-9012-3456789012-3456789012
 Price: € 12,345.67

5. 2015 - Ladies' Automatic President Ladies President
 Reference: 5015-1234-5678-9012-3456789012-3456789012
 Price: € 12,345.67



Calatrava Ladies and Gondolo



37 370.200 - Ladies Calatrava Venezia 11.014
Manual winding. Calatrava 210. 750. Diamonds set with 84 diamonds 7-0.47 ct. Sapphire crystal case back. White. 47.32 mm.

38 370.100
Self-winding. Ultra-thin movement. Calatrava 210.
Sapphire crystal case back. Rose gold. 47.32 mm.

39 370.000
Self-winding. Ultra-thin movement. Calatrava 210.
Case set with 180 diamonds 1.02 ct. "Flower" setting. Pump buckle set with 26 diamonds 1.51 ct. Sapphire crystal case back. Rose gold. 34.8 mm.

40 370.000 - Calatrava Venice bracelet
Manual winding. Calatrava 210. Case set with 101 diamonds and 100 gold diamonds 1.02 ct. "Flower" setting. Pump buckle set with 26 diamonds 1.51 ct. Sapphire crystal case back. Rose gold. 34.8 mm.

41 370.000 - Calatrava Venice bracelet
Manual winding. Calatrava 210. Case set with 101 diamonds and 100 gold diamonds 1.02 ct. "Flower" setting. Pump buckle set with 26 diamonds 1.51 ct. Sapphire crystal case back. White gold. 34.8 mm.

42 370.200 - King
Calatrava crown movement. Set with 48 diamonds 7-0.26 ct. White gold.

Ladies Complications and Grand Complications



46 **ADL**
Manual winding. Caliber 275 (P.12). Moon phase.
Diamonds set with 48 diamonds (0.52 ct).
Sapphire-crystal case back. Yellow gold, 33 mm.

47 **25.1 130g**
Calibre of fine decoration. Set with 24 diamonds
(4.33 ct). Yellow gold.

51 **4964 - Diamond Ribbon**
Manual winding. Caliber 270 (P.12). Moon phase.
Seconds subdial. Rose and case set with 273 graduated
cut diamonds in a total 2.12 ct. Pong buckle set with
22 diamonds (0.26 ct). Sapphire-crystal case back.
White or rose gold, 33.3 mm.

52 **4964 400 - Diamond Ribbon Jour d'été**
Manual winding. Caliber 270 (P.12). Moon phase. Seconds
subdial. Large set with 48 diamonds (0.57 ct). Rose and dial
set with 283 graduated cut diamonds in a total 0.932 ct.
12 holes for the hour markers (0.01 ct). 18k gold dial plate.
Pong buckle set with 22 diamonds (0.26 ct). Sapphire
crystal case back. Rose gold, 33.3 mm.

53 **4964 400 - Diamond Ribbon Jour d'été**
Manual winding. Caliber 270 (P.12). Moon phase. Seconds
subdial. Large set with 48 diamonds (0.57 ct). Rose and dial
set with 283 graduated cut diamonds in a total 0.932 ct.
12 holes for the hour markers (0.01 ct). 18k gold dial plate.
Pong buckle set with 22 diamonds (0.26 ct). Sapphire
crystal case back. Rose gold, 33.3 mm.

Ladies Complications and Grand Complications



40 1803 - Ladies First Perpetual Calendar
 The ultimate calendar watch. Perpetual calendar
 with micro-rotors, leap year and 28 hour cycle to prevent
 time errors. Bezel set with 48 diamonds (2.08 ct).
 18K white gold set with 27 diamonds (3.22 ct).
 Micro-rotors for date and month crystal case back.
 18K white gold, 42 mm.

41 1805 - Ladies Calendar
 Self-winding, Ladies' 12K 12K 12K Annual Calendar. Day
 and month for women. Date is set against Moon phase.
 Super accurate time. Case set with 361 diamonds (2.43 ct).
 Crown set with 18 diamonds (0.24 ct). Ring bezel set
 with 27 diamonds (0.21 ct). Sapphire crystal case back.
 White to rose gold, 28 mm.

42 7000 180 - 4 Chronograph
 Ladies' self-winding Calibre 121 29 258 FH. Chronograph.
 Central chronograph hand and instantaneous 30-minute
 counter. Bezel set with 48 diamonds. Bezel set with
 27 diamonds (0.48 ct). Ring bezel set with 27 diamonds
 (0.21 ct). Self-winding pushers. Sapphire crystal case back.
 Black gold, 28 mm.

NEW

43 7001 - World Time
 Self-winding Calibre 12C 412. 24-hour world time.
 Indicators for time 24 time zones. Bezel set with 42 diamonds.
 4-0.82 ct. Ring bezel set with 27 diamonds (0.21 ct).
 Sapphire crystal case back. White to rose gold, 31.5 mm.





ROLEX

ROLEX




ROLEX

INDIAN



12


ROLEX




ROLEX




ROLEX




ROLEX




ROLEX




ROLEX

Caribbean Sea



210

209

MILGAUSS



ROLEX





PACIFIC

Caribbean



EXPLORER II

207



EXPLORER

206

EXPLORER I

207





186



187



SEA-DWELLER

181



183



182

NEW DEEPSA





180



179



178

ROLEX

ROLEX

YK
T 1814H



Ω
OMEGA





Dive 2000 - 42mm
Master Chronometer
Calibre 8800



CO-AXIAL
MASTER CHRONOMETER
300m / 1000ft



OMEGA
MASTER CHRONOMETER
300m / 1000ft





Diver 300M - 42 mm
- Grade 2 Titanium case with
18K Sedna™ and Titanium
- Grade 5 Titanium dial
- Master Chronometer Calibre 8806
- Limited Edition of 2,500 pieces

OMEGA HADSLOCK
Patented oriented crown & bezel
function, wave-edged design



24

19

13



Olympic Games Collection
Reference 303.101
White diamond dial with 1x20" pulse
measurement intervals, Olympic rings and
"Olympic" text in blue, yellow,
black, green or red.
Design inspired by an OMEGA Proton
chronograph that was used in 1948 for the
London Olympic Games.
Water Chronometer Calibre 8826
Limited Edition of 200 boxes.

Olympic Games Collection
Seamaster 99.5 mm Platinum
Detailed black chrome dial
Horseshoe-shaped leather case
white gold inlays
Waterproof to 30 ATM, shock
resistant and "Swissmade"
Master Chronometer Calibre 882
Limited Edition of 200 pieces

Olympic Games Collection
Seamaster 99.5 mm Gold
Chronograph Silver dial, 28K Sedgwick™ gold,
18K Yellow gold or 18K Cinquage Gold™
engraved by laser assisted with
"OFFICIAL SWATCHES™" and the best
series and dates, both past and future,
of OMEGA's horology of the
Olympic Games.
Master Chronometer Calibre 882

"Cannes Gold"
Manufactured 18K white gold alloy
with a 20% noble and platinum
for its high brilliance, which is not
targeted.





Classic Games Collection
Swatches 34.5 cm
Chronograph case with blue, yellow, black,
green or red dial and aluminum bracelet
with "CHRONO" hand. 1000000 and the
gold ring and strap, both gold and
black, with 2012 Olympiad of the
Olympic Games.
Water Chronometer Calibre 8910
Swiss edition of 2,112 pieces each.





Omega Timepieces & Jewelry



Aquos Terra 42.5 mm
Honey Bee Strap

Aquos Terra 42.5 mm
Sergio Tacchini

Master Chronometer
Constellation 4125



Master Chronometer
Annual Calendar
Calibre 8923



Master Chronometer
Calibre 8901



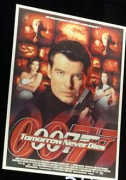


JAMES BOND LIMITED EDITION

007[™]



JAMES BOND LIMITED EDITION



JAMES BOND 50TH ANNIVERSARY LIMITED EDITION

Ω
OMEGA
Seamaster



40 YEARS OF JAMES BOND

Ω
OMEGA



Grubbe ORIGINAL



007

JAMES BOND LIMITED EDITION

JAMES BOND LIMITED EDITION

OMEGA
Seamaster

40 YEARS OF JAMES BOND

JAMES BOND 50th ANNIVERSARY LIMITED EDITION

GoldenEye

Die Another Day



Ω OMEGA



CHAN

CHRONOMETER

OMEGA

CHRONOMETER

HAMILTON





CASINO ROYALE
LIMITED EDITION

007



SKYFALL
LIMITED EDITION



QUANTUM OF SOLACE
LIMITED EDITION

Ω
OMEGA
Seamaster



SPECTRE
LIMITED EDITION



LTON

007

CASINO ROYALE LIMITED EDITION

SKYFALL LIMITED EDITION

OMEGA
Seamaster

QUANTUM OF SOLACE LIMITED EDITION

SPECTRE LIMITED EDITION


SPECTRE
007
COMING SOON

SKYFALL



GA



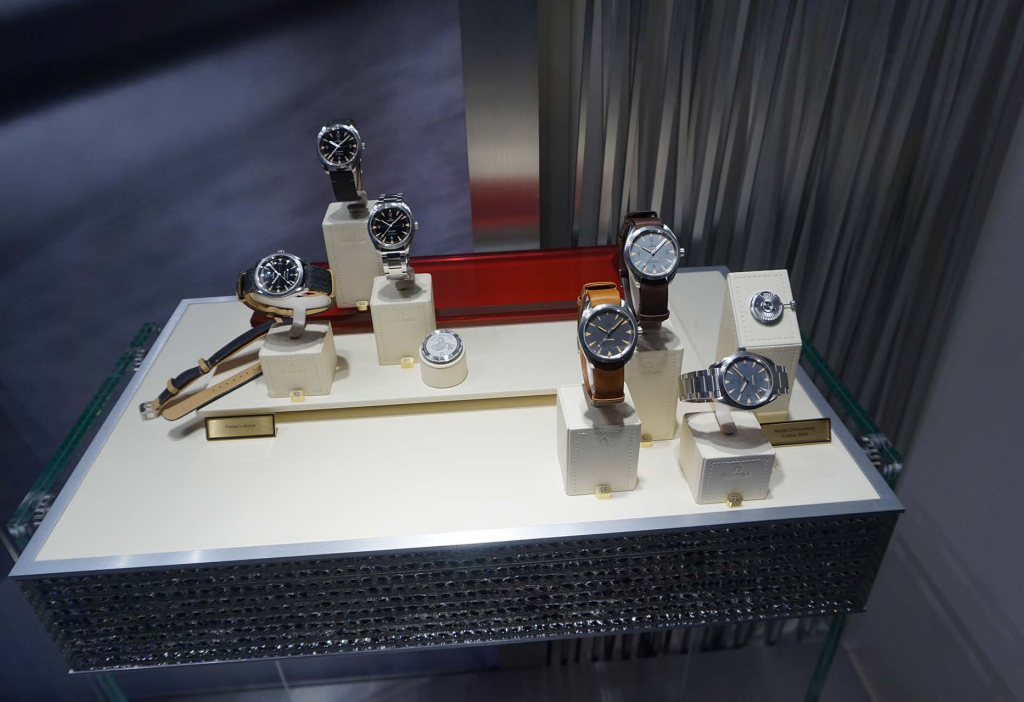


...the brand's first automatic chronograph watch, the Omega Constellation, was introduced in 1956. The Constellation was a revolutionary watch for its time, featuring an anti-magnetic shield and a self-winding movement. It was designed to be a reliable and accurate timepiece for the modern world. The Constellation was a success, and it paved the way for the development of the Omega Constellation series, which includes the Omega Constellation Date, Omega Constellation Automatic, and Omega Constellation Chronograph. The Constellation series is a testament to Omega's commitment to innovation and precision in watchmaking.

Seamaster 1205 - 35 mm
Master Chronometer Self-Setback
Carbon Steel
Limited Edition of 1,343 pieces

OMEGA NAVAC LOCK
Polarised sapphire caseback
That sapphire crystal is laser-engraved
and equipped by hand with a 70th
anniversary logo, a 40x logo and
Grand Cruisit Wailea Watch, the first
piece used by the Royal Air Force.

Seamaster 1215 - 41 mm
Master Chronometer
Callias 9505
Limited Edition of 1,343 pieces



25TH ANNIVERSARY



BREITLING
1884

SEAMASTER DIVER 300M





BREITLING
1884



25TH ANNIVERSARY



SEAMASTER DIVER 300M

CHANEL





JB
1735
BLANCPAIN



PLATEAU

BLANCPAIN



BLANCPAIN

HARRY WINSTON



2



J.B.
1785
BLANCPAIN
WATCHMAKERS OF THE WORLD SINCE 1785

20

J.B.
BLANCPAIN
LE BRASSUS
Collection

J.B.
BLANCPAIN



VILLERET 系列
中華年曆表
◆ 型號: 60505-3621-558
◆ 18K紅金表壳, 直径45毫米
◆ 白色大明火珐琅表盤



VILLERET Collection
TOURBILLON VOLANT UNE MINUTE 12 JOURS

- Ref. 66240-3631-55B
- 18ct red gold Diameter 42 mm
- White grand feu enamel dial
- Under-lug correctors





Breguet
Depuis 1775

BRANDS
EXHIBITION

Breguet
Depuis 1775

Breguet
Depuis 1775

Breguet
Depuis 1775

Breguet
Depuis 1775

EXHIBITION STAND

ades Complications



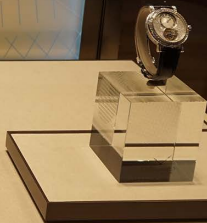
CLASSIQUE
GRANDS COMPLICATIONS
Réf. 5152R-01A
Patek Philippe
CHATELAIN



CLASSIQUE
GRANDS COMPLICATIONS
Réf. 5152R-01A
Patek Philippe
CHATELAIN



LES CALIBRES DE PATEK
Réf. 5152R-01A
Patek Philippe
CHATELAIN



NEW AVANT 2012
MONTRE CHRONOMETRIQUE
AUTOMATIQUE
Ref. 2617

NEW AVANT 2012
MONTRE A QUARTZ METALLIQUE
AUTOMATIQUE
Ref. 2618

NEW AVANT 2012
MONTRE CHRONOMETRIQUE
AUTOMATIQUE
Ref. 2617

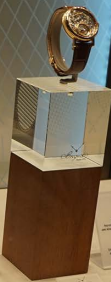
Tourbillon



Patek Philippe
CLASSICO
GRANDE COMPLICAZIONE
Extra Grande Complicazione
1845 2017



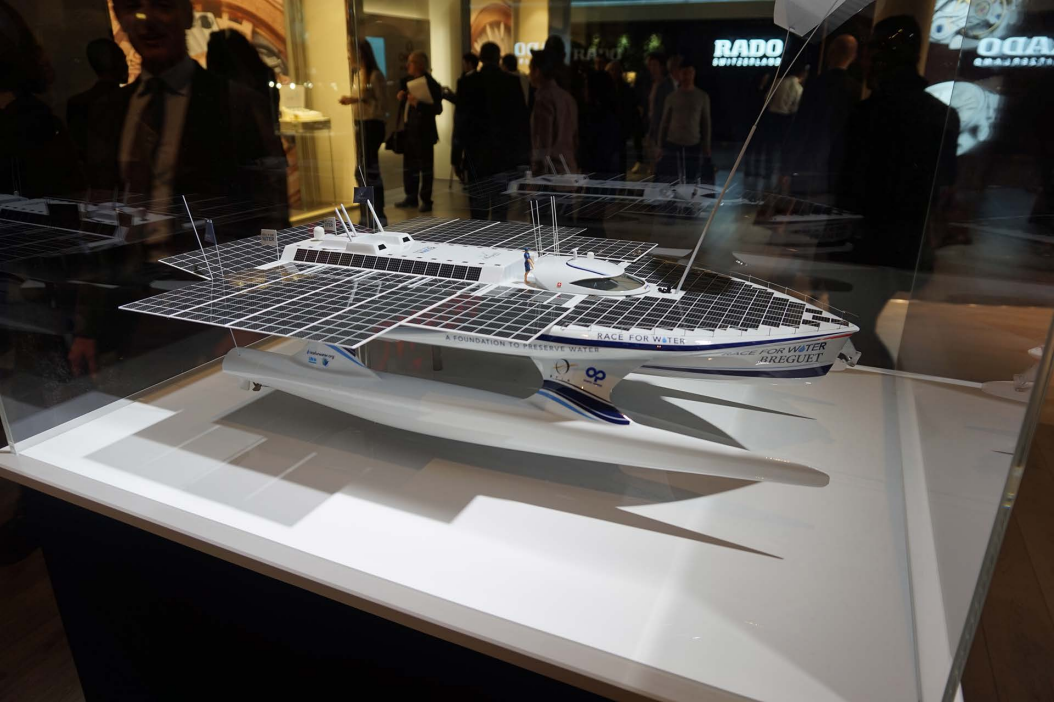
Patek Philippe
CLASSICO
GRANDE COMPLICAZIONE
1845 2017



Patek Philippe
CLASSICO
GRANDE COMPLICAZIONE
1845 2017

Patek Philippe
GRANDE COMPLICAZIONE
1845 2017





RADO
SWITZERLAND

A FOUNDATION TO PRESERVE WATER

RACE FOR WATER

RACE FOR WATER
BREGUET

Indesit

OP




Breguet
Depuis 1775

BIANCAVINI


Breguet
Depuis 1775

WIKI YORK



March of Friendship
March 21st 2018
Basel

HUBLOT

BVLGARI



OROLOGIO FERDINANDI
1980



OROLOGIO FERDINANDI
1980



OROLOGIO FERDINANDI
1980



OROLOGIO FERDINANDI
1980



OROLOGIO FERDINANDI
1980



OROLOGIO FERDINANDI
1980





DEFY CLASSIC

New Elite skeletonised movement
New 41 mm Brushed Titanium case
Diamond-set dial
Silicon escape-wheel and lever
Black rubber with blue alligator
leather coating

DEFY CLASSIC

New Elite skeletonised movement
New 41 mm Brushed Titanium case
Openworked dial
Silicon escape-wheel and lever
Titanium Bracelet

ZENITH

MANUFACTURE
LE LOCLE
EL PRIMO



**DEFY EL PRIMERO 21
BLACK CERAMIC**
Full Ceramic product (Case and
Bracelet)
1/100th of a second Chronograph
movement
Exclusive dynamic signature of one
rotation per second
1 escapement for the Watch (36,000
Vph) - 3 Hzl, 1 escapement for the
Chronograph (360,000 Vph - 50Hz)
Certified Chronometer

DEFY EL PRIMERO 21 BLUE
Brushed Titanium
1/100th of a second Chronograph
movement
Exclusive dynamic signature of one
rotation per second
1 escapement for the Watch (36,000
Vph) - 3 Hzl, 1 escapement for the
Chronograph (360,000 Vph - 50Hz)
Special blue movement plate and
oscillating weight
Black rubber with blue alligator
leather coating
Certified Chronometer



DEFY EL PRIMERO 21 BLUE
Brushed Titanium case
1/100th of a second Chronograph movement
Exclusive dynamic signature of one rotation per second
1 escapement for the Watch (36,000 VpH - 5 Hz), 1 escapement for the Chronograph (156,000 VpH - 50 Hz)
Special blue movement plate and oscillating weight
Blue rubber strap
Certified Chronometer



DEFY EL PRIMERO 21 ROSE GOLD
18-ct rose gold case
1/100th of a second Chronograph movement
Exclusive dynamic signature of one rotation per second
1 escapement for the Watch (36,000 VpH - 5 Hz), 1 escapement for the Chronograph (156,000 VpH - 50 Hz)
Certified Chronometer
Black rubber with brown alligator leather coating



DEFY LAB

The most precise mechanical watch ever

Reinvention of Huyguens sprung balance principle

A new monolithic oscillator forming a monolithic whole in silicon

1.816 x 1.70 mm - 200,000 vibrations per hour



**PILOT CRONOMETRO TIPO CP-2
FLYBACK 43 MM**
Inspired by the famous Carrelis model
from the 1940's
Argent steel case
Automatic El Primero column-wheel
chronograph with flyback function



**PILOT CRONOMETRO TIPO CP-2
FLYBACK 43 MM**
Inspired by the famous Carrelis model
from the 1940's
Bronze case
Automatic El Primero column-wheel
chronograph with flyback function

ZENITH
EL PRIMERO



CHRONOMASTER EL PRIMERO
RANGE ROVER VELAR

CHRONOMASTER EL PRIMERO
LEGEND OF COHIBA

Time is art, partnership with Cohiba
Special Case Association with the
famous taste of Cohiba. The
El Primero Legend of Cohiba

ZENITH



ZENITH





CHRONOMASTER EL PRIMERO
TOURBILLON SKELETON
Reference 5200-9120-9010-9000
Automatic movement, 21,600 vibrations per hour
Case diameter: 42 mm
Case thickness: 12.5 mm
Water resistance: 30 m



CHRONOMASTER EL PRIMERO
GRANDE DATE FULL OPEN
Reference 5200-9120-9010-9000
Automatic movement, 21,600 vibrations per hour
Case diameter: 42 mm
Case thickness: 12.5 mm
Water resistance: 30 m



CHRONOMASTER EL PRIMERO

38 MM

Iconic 3 colored counters

Original 38 mm size inspired from

1969 model

Automatic high frequency
column-wheel Chronograph with date
indication at 4:30 o'clock



**CHRONOMASTER EL PRIMERO
OPEN**

Open revealing the heart beating of the
El Primero movement
Automatic high frequency
column-wheel Chronograph
42 mm steel case
COSC Certified



ZENITH





#DontCrackUnderPressure



MOTOR RACING





LADIES



THE HEUER CAMARGUE



THE HEUER CAMARGUE



THE HEUER AMBASSADOR



THE HEUER AMBASSADOR



THE HEUER AMBASSADOR



THE HEUER AMBASSADOR



THE HEUER AMBASSADOR



MEYER MEN





ROLEX
DAYTONA
CHRONOMETRE
SUPERLATIVE
OFFICIALLY
CERTIFIED



ROLEX
DAYTONA
CHRONOMETRE
SUPERLATIVE
OFFICIALLY
CERTIFIED



TAG HEUER
FORMULA 1
CHRONOMETRE
SUPERLATIVE
OFFICIALLY
CERTIFIED



TAG HEUER
FORMULA 1
CHRONOMETRE
SUPERLATIVE
OFFICIALLY
CERTIFIED




CARRERA
43mm · Heuer 01
In-House Manufacture
Chronograph



ITAG
AQUARACER
41mm
New Color



ITAG
AQUARACER
41mm
Calibre 5



BUNDESLIGA



ITAG
AQUARACER
41mm
Calibre 5



ITAG
CAMERA
42mm - Height 0.1
in House Manufacture
Marine Chrono - United Edition



AUSTRALIA



CONMEBOL
LIBERTADORES
BRIDGESTONE



AGI
AQUA 1
United Edition

TAG
HEUER
AQUARACER
510M
CALIBRE 5




AQUARACER
 43mm
 Carbon 3


CARRERA
 43mm - Water 33
 in House Manufacture
 Manchester United Edition


FORMULA 1
 43mm
 Manchester United Edition





Don't Crack Under Pressure




BREITLING
1884





NAVITIMER 0



NAVITIMER 8



NAVITIMER 1



AUTOMATIC 29
Automatic, 29,800 hours of power reserve
Reference: 5162-1-11
Price: 2,950 CHF, 2,950 EUR

NAVITIMER 1
Automatic, 29,800 hours of power reserve
Reference: 5162-1-11
Price: 2,950 CHF, 2,950 EUR

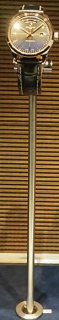
NAVITIMER 1
Automatic, 29,800 hours of power reserve
Reference: 5162-1-11
Price: 2,950 CHF, 2,950 EUR

PROFESSIONAL





TRANSOCEAN





MAURICE LACROIX

Manufacture Horlogère Suisse

MAURICE  LACROIX



YOUR TIME IS NOW.

MAURICE  LACROIX

Manufacture Horlogère Suisse



LE LACROIX



MASTERPIECE

Petitegrade Calendar
Automatic Manufacture
Movement ML190
Ø 43 mm



MASTERPIECE



MASTERPIECE



MASTERPIECE



MASTERPIECE

Skeleton
Mechanical Manufacture
Movement ML134
Ø 43 mm

SEIKO





High Precision Chrono
1145

High Precision Quartz
8112

Accuracy: ±0.000001 sec per year
Movement: 28,800 vph with diamond
set screw (pat. pend.)



Caliber 9525

The perfect balance of slenderness and performance.

The case is built to offer both a slim profile and a high level of performance. It is just 8.49 mm in height, allowing the case to fit every wrist while it also has the strength to deliver a 50-hour power reserve and a precision of ±3 to ±6 seconds a day, which is a tangible tribute to the innovative engineering.

Caliber 9525 uses Grand Seiko's most advanced technologies, including the latest Super 583 and 585 alloys for the main spring and balance spring with MEMS engineering for the pallet fork, escapement wheel and other key components.

The gear train layout is carefully tuned to fit profile of the teeth on each gear to enhance maximum energy efficiency. The escapement wheel has a new design that is lighter but still robust and designed for maximum durability. It is on the case with 53 jewels. Like all other Grand Seiko mechanical watches, this watch is made and assembled by hand at the Shizukaishi watch studio.

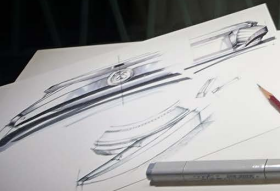
No compromise is made at any stage; each 9525 movement is put through the same rigorous 17-day testing procedure as every one of Grand Seiko's mechanical watches. The goal is both striking and subtle. Its rich look is achieved with subtle lines that create the vertical texture of the snow on Mt. Iwate that concludes the Shizukaishi watch studio.

Most hours of
9525 New

28,800 vibrations per hour
Movement: 28,800 vph
Accuracy: ±3 seconds per day
The case will come with diamonds
(limited edition of 50)



Grand Seiko



Grand Seiko
Reference No. SBGA001
White dial, metal bracelet
1960s design

Grand Seiko
Reference No. SBGA002
White dial, brown leather strap
1960s design

Grand Seiko
Reference No. SBGA003
Dark dial, metal bracelet
1960s design

These Grand Seiko watches are a tribute to the 50th anniversary of the company's founding in 1960. The watches are designed to celebrate the 50th anniversary of the company's founding in 1960. The watches are designed to celebrate the 50th anniversary of the company's founding in 1960.

The watches are designed to celebrate the 50th anniversary of the company's founding in 1960. The watches are designed to celebrate the 50th anniversary of the company's founding in 1960. The watches are designed to celebrate the 50th anniversary of the company's founding in 1960.

The watches are designed to celebrate the 50th anniversary of the company's founding in 1960. The watches are designed to celebrate the 50th anniversary of the company's founding in 1960. The watches are designed to celebrate the 50th anniversary of the company's founding in 1960.



BS
בש
Q2

Elegance Collection
BS
בש



GS
Grand Seiko

Sport Collection

Heritage Collection

Spring Drive
Grand Seiko

GRAHAM
WATCHMAKERS SINCE 1675





GRAHAM
WATCHES



GRAHAM
WATCHES



GRAHAM
WATCHES



GRAHAM
WATCHMAKERS SINCE 1695

GRAHAM

GRAHAM
WATCHMAKERS SINCE 1695



Colors

de GRISOGONO

de GRISOGONO
JEWELRY

de GRISOGONO

SWAROVSKI



Time audacity

FINE WATCH CREATIONS
2004 to Present





MAURICE

Crown Colour

Crown Colour

D29 D29

ROSY BLUE

DIAMUSA

Novel Collection

D18 D18

NOVEL COLLECTION



DIACOLOR
FINE COSTUME JEWELRY
Celebrating 50th

D13

L. BORNHORN
JEWELRY

PAUL WILD

SCARSELLI
PARISIAN BEJEWELLED

GRON + RIPP
JEWELRY

B09

GR
D-ID

GRON + RIPP
JEWELRY

GRON + RIPP
JEWELRY



STONES AND PEARLS

HALL OF ELEMENTS









SWAROVSKI

EMME-LEONA







